

DB2-xxSxxLS Series

DC-DC Converter | 2W | SIP6 | Fixed voltage input, unregulated output | 3000VDC



Features

- SIP6 Package
- Operating Temperature Range: -40°C to ~105°C
- Isolation Voltage: 3000VDC
- Full Load Efficiency: up to 88% (typ.)
- Continuous Short Circuit Protection
- Designed to meet IEC/EN/BS EN/UL 62368

Product Description



The DB2-xxSxxLS series is 2W unregulated DC/DC converters that are typically used in cost sensitive general purpose power isolation and voltage matching applications. Typical applications are digital interfaces, voltage conversion in distributed powersy stems, general low-frequency analog circuits, relay drive circuits, data switching circuits etc.

Selection Guide

Certification	Part No.	Input Voltage	Output			Full Load Efficiency (%)	Capacitive Load (μF)
		Nominal (Range) (VDC)	Voltage (VDC)	Current (mA) Min.	Current (mA) Max.		
EN/UL Pending	DB2-03S03LS	3.3 (2.97~3.63)	3.3	40	400	76	2400
	DB2-03S05LS	3.3 (2.97~3.63)	5	40	400	83	2400
	DB2-03S09LS	3.3 (2.97~3.63)	9	22	222	85	1000
	DB2-03S12LS	3.3 (2.97~3.63)	12	16	167	85	560
	DB2-03S15LS	3.3 (2.97~3.63)	15	13	133	85	560
	DB2-03S24LS	3.3 (2.97~3.63)	24	8	83	85	220
	DB2-05S03LS	5 (4.5~5.5)	3.3	40	400	81	2400
	DB2-05S05LS	5 (4.5~5.5)	5	40	400	83	2400
	DB2-05S09LS	5 (4.5~5.5)	9	22	222	86	1000
	DB2-05S12LS	5 (4.5~5.5)	12	16	167	85	560
	DB2-05S15LS	5 (4.5~5.5)	15	13	133	86	560
	DB2-05S24LS	5 (4.5~5.5)	24	8	83	85	220
	DB2-12S03LS	12 (10.8~13.2)	3.3	40	400	82	2400
	DB2-12S05LS	12 (10.8~13.2)	5	40	400	83	2400

Selection Guide

Certification	Part No.	Input Voltage	Output			Full Load Efficiency (%) Typ.	Capacitive Load(μF) Max.
		Nominal(Range) (VDC)	Voltage (VDC)	Current (mA) Min.	Current (mA) Max.		
EN/UL Pending	DB2-12S09LS	12 (10.8~13.2)	9	22	222	84	1000
	DB2-12S12LS	12 (10.8~13.2)	12	16	167	87	560
	DB2-12S15LS	12 (10.8~13.2)	15	13	133	87	560
	DB2-12S24LS	12 (10.8~13.2)	24	8	83	87	220
	DB2-15S03LS	15 (13.5~16.5)	3.3	40	400	82	2400
	DB2-15S05LS	15 (13.5~16.5)	5	40	400	83	2400
	DB2-15S09LS	15 (13.5~16.5)	9	22	222	85	1000
	DB2-15S12LS	15 (13.5~16.5)	12	16	167	87	560
	DB2-15S15LS	15 (13.5~16.5)	15	13	133	88	560
	DB2-15S24LS	15 (13.5~16.5)	24	8	83	88	220
	DB2-24S03LS	24 (21.6~26.4)	3.3	40	400	82	2400
	DB2-24S05LS	24 (21.6~26.4)	5	40	400	84	2400
	DB2-24S09LS	24 (21.6~26.4)	9	22	222	85	1000
	DB2-24S12LS	24 (21.6~26.4)	12	16	167	88	560
	DB2-24S15LS	24 (21.6~26.4)	15	13	133	88	560
	DB2-24S24LS	24 (21.6~26.4)	24	8	83	88	220

Note: The above efficiency is measured at nominal input voltage and rated output load.

Input Specifications

Item	Operating Conditions		Min.	Typ.	Max.	Unit
Input Current (Full Load/No-load)	3.3VDC Input	3.3VDC Output	--	526/10	538/15	mA
		5VDC Output	--	730/10	748/15	mA
		Others	--	713/12	730/18	mA
	5VDC Input	3.3VDC Output	--	326/8	334/15	mA
		5VDC Output	--	482/8	494/15	mA
		9/12/15VDC Output	--	471/10	482/15	mA
		24VDC Output	--	471/18	482/25	mA
	12VDC Input	3.3VDC Output	--	134/8	138/15	mA
		5/9VDC Output	--	201/8	206/15	mA
		Others	--	192/8	196/15	mA
	15VDC Input	3.3VDC Output	--	107/7	110/15	mA
		5/9VDC Output	--	161/7	165/15	mA
		Others	--	153/7	157/15	mA
	24VDC Input	3.3VDC Output	--	67/5	69/15	mA
		5/9VDC Output	--	99/5	102/15	mA
Others		--	95/5	97/15	mA	
Reflected Ripple Current			--	15	--	mA
Surge Voltage	3.3VDC Input		-0.7	--	5	VDC
	5VDC Input		-0.7	--	9	VDC
	12VDC Input		-0.7	--	18	VDC
	15VDC Input		-0.7	--	21	VDC
	24VDC Input		-0.7	--	30	VDC
Input Filter Type			Capacitance Filter			
Hot Plug			Unavailable			

Output Specifications

Item	Operating Conditions		Min.	Typ.	Max.	Unit
Output Voltage Accuracy			See Output Regulation Curve			
Line Regulation	Input Voltage Variation: $\pm 1\%$	3.3V Output	--	± 1.5	--	%
		Others	--	± 1.2	--	%
Load Regulation	10%~100% load	3.3VDC Output	--	12	--	%
		5VDC Output	--	12	--	%
		9VDC Output	--	8	--	%
		12VDC Output	--	8	--	%
		15VDC Output	--	8	--	%
		24VDC output	--	6	--	%

Ripple & Noise	20MHz bandwidth (peak-to-peak)	--	60	120	mV
Temperature Coefficient	Full load	--	±0.02	--	%/°C
Short Circuit Protection	Continuous, self-recovery				

Note: Ripple & noise are measured at 20MHz of bandwidth with a 10uF electrolytic capacitor and a 1uF ceramic capacitor connected inparallel at the output.

General Specifications

Item	Operating Conditions	Min.	Typ.	Max.	Unit
Isolation Voltage	Input-output, test time 1 minute, leakage current less than 1mA	3000	--	--	VDC
Insulation Resistance	Input-output, insulated voltage 500VDC	1000	--	--	MΩ
Isolation Capacitance	Input-Output, 100KHz/0.1V	--	20	--	pF
Operating Temperature	Derating when operating temperature ≥ 85°C (See Temperature derating curve chart)	-40	--	105	°C
Storage Temperature		-55	--	125	°C
Case Temperature Rise	Ta=25°C, Nominal Input, Full Load	--	25	--	°C
Storage Humidity	Non-condensing	5	--	95	%RH
Soldering method	Wave soldering	260±5°C; Time: 5-10 seconds			
	Manual soldering	360±10°C; Time: 3-5 seconds			
Switching frequency	Full load, nominal input voltage	--	220	--	kHz
MTBF	MIL-HDBK-217F@25°C	>3500Kh			

Mechanical Specifications

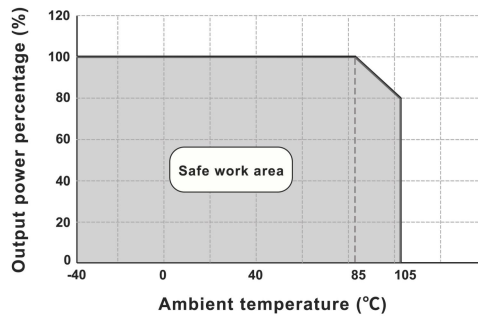
Case material	Black flame-retardant heat-resistant plastic (UL94V-0)
Mechanical Dimensions	19.60 * 10.10 * 7.05 mm
Weight	2.4 g (typ.)
Cooling method	Free air convection

Electromagnetic Compatibility (EMC)

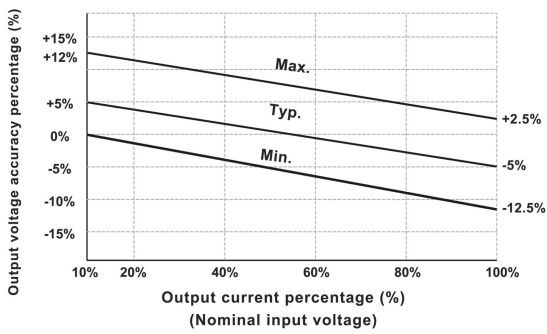
EMI	CE	CISPR32/EN55032 CLASS B (EMC recommended circuit see Fig. 2)
	RE	CISPR32/EN55032 CLASS B (EMC recommended circuit see Fig. 2)
EMS	ESD	IEC/EN61000-4-2 Contact ±6KV perf. Criteria B

Product Characteristic Curve

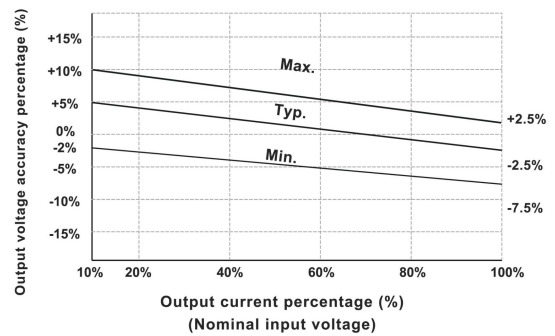
Temperature Derating Curve



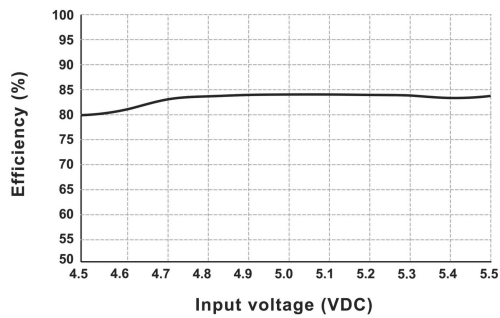
Output Regulation Curve(3.3V Output)



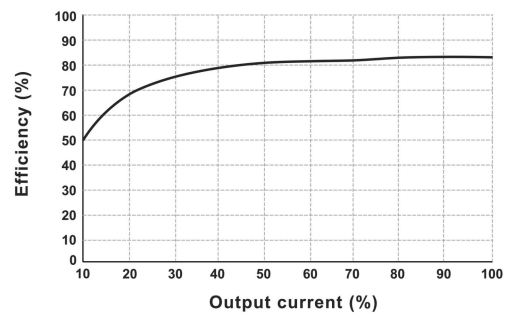
Output Regulation Curve (Others)



Efficiency VS Input Voltage (Full Load, DB2-05S05LS)

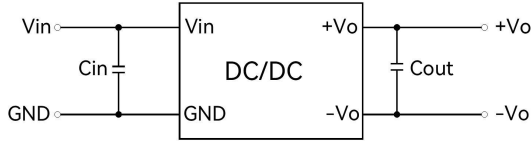


Efficiency VS Output Load (Vin=5V, DB2-05S05LS)



Design Reference - Application Circuit

Application circuit



(Figure 1)

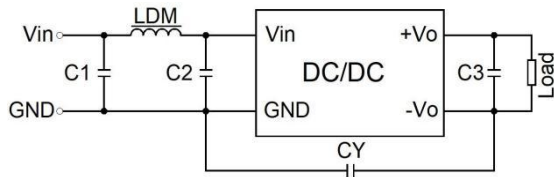
Recommended Capacitive Load Value Table

Vin	Cin	Vo	Cout
3.3/5VDC	10uF/16V	3.3/5VDC	10uF/16V
12VDC	4.7uF/25V	9/12VDC	2.2uF/25V
15VDC	2.2uF/25V	15VDC	1.0uF/25V
24VDC	1.0uF/50V	24VDC	1.0uF/50V

All DC/DC converters in this series are tested according to the recommended application circuit (Figure 1) before the shipment. To further reduce input and output ripple, the external input/output capacitors C_{in}/C_{out} can be increased or capacitors with lower equivalent series impedance can be selected. For each output, under safe and reliable operating conditions, the maximum capacitance of the filter capacitor must not exceed the maximum capacitive load of the product.

Design Reference - EMC Solutions - Recommended Circuits

EMC Recommended Circuit Design and Application



(Figure 2)

Recommended parameter values

C1	4.7μF /50V
C2	4.7μF /50V
C3	Refer to the C_{out} parameter in Figure 1
CY	1000pF/3kV
LDM	6.8μH

Note:

1. Typical Application

If further reduction of input and output ripple is required, a Capacitance Filter network can be connected at the input and output terminals, as shown in the application circuit in Figure 1. However, care should be taken to select appropriate filter capacitors. If the capacitor is too large, it may cause startup issues. For each output, under conditions ensuring safe and reliable operation, the recommended capacitive load values are detailed in the table.

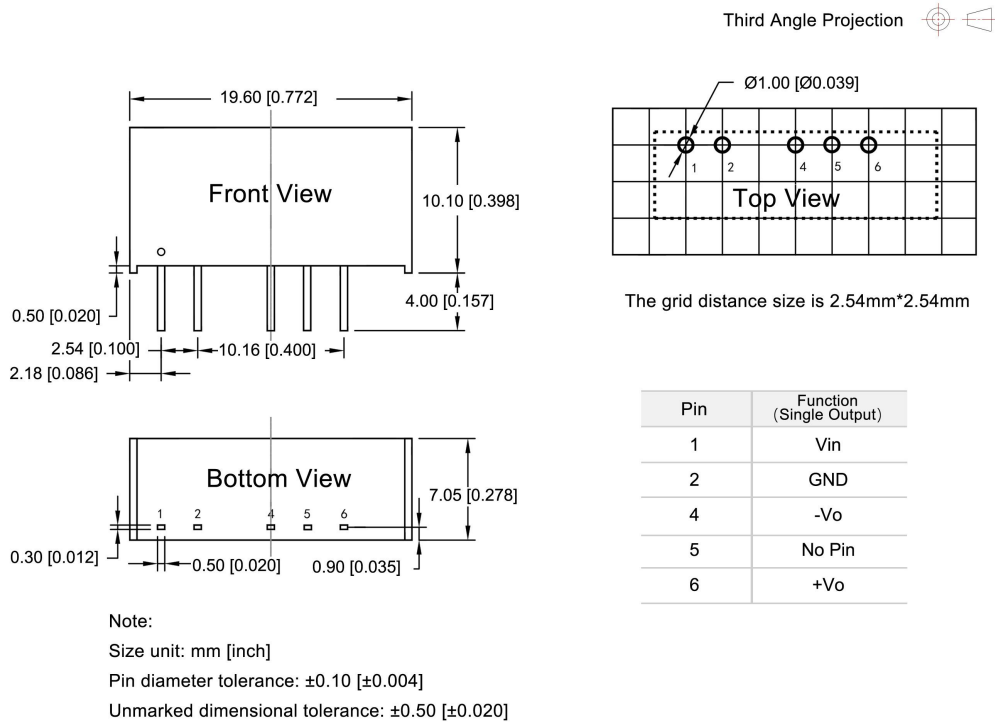
2. EMC Recommended Circuit: See Figure 2

3. Output Load Requirements

To ensure efficient and reliable operation of the module, the minimum output load during use should not be less than 10% of the rated load. If the required power is indeed small, please connect a resistor in parallel at the output (the sum of the resistor's power dissipation and the actual usage power should be greater than or equal to 10% of the rated power).

Dimensions and Recommended Layout

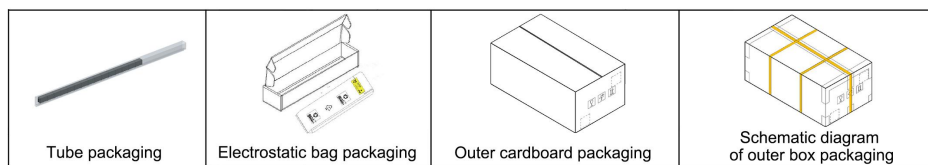
DB2-xxSxxLS Dimensions and Recommended Layout



Packaging Information

Model series (Tube packaging)	Quantity per tube (pcs/ tube)	Quantity of electrostatic bag (pcs/ bag)	Quantity of inner box (pcs/ box)	Full box Quantity (pcs)
DB2-xxSxxLS	26	416	1664	6656

The schematic diagram of tube packaging is shown below:



Product precautions

1. The input voltage should not exceed the specified range value, otherwise it may cause permanent and irreparable damage;
2. It is recommended to use at a load of over 5%. If the load is below 5%, the ripple index of the product may exceed the specifications, but it does not affect the reliability of the product;
3. The maximum capacitive load is tested within the input voltage range and under full load conditions;
4. Unless otherwise specified, all indicators in this manual are measured at $T_a=25\text{ }^\circ\text{C}$, humidity<75% RH, nominal input voltage, and output rated load;
5. All indicator testing methods in this manual are based on our company's corporate standards;
6. Our company can provide product customization, and specific requirements can be directly contacted by our technical personnel;
7. Product specifications are subject to change without prior notice.

Manufacturer contact information

Bettpower Guangzhou Electronic Technology Co., Ltd.

Website: www.bettpower.com

Telephone: +86 - 020 - 32166256

Email: info@bettpower.com

Address: Room 2514-2515, Building A1,1 Doutang Road, Huangpu District, Guangzhou, China

BETTPOWER is a registered trademark of BETTPOWER Guangzhou Electronic Technology Co., Ltd. All of its product names, models, trademarks and brands are the property of the Company.

BETTPOWER Guangzhou Electronic Technology Co., Ltd reserves all rights and the right of final interpretation.