

DB3-xxSxxLS Series

DC-DC Converter | 3W | SIP6 | Fixed voltage input, unregulated output | 3000VDC



Features

- SIP6 Package
- Operating Temperature Range: -40°C ~ +105°C
- Isolation Voltage: 3000VDC
- Full Load Efficiency: up to 87% (typ.)
- Continuous Short Circuit Protection
- Designed to meet IEC/EN/BS EN/UL 62368

Product Description



The DB3-xxSxxLS series is 3W unregulated DC/DC converters that are typically used in cost sensitive general purpose power isolation and voltage matching applications. Typical applications are digital interfaces, voltage conversion in distributed powersy stems, general low-frequency analog circuits, relay drive circuits, data switching circuits etc.

Selection Guide

Certification	Part No.	Input Voltage	Output			Full Load Efficiency (%) Typ.	Capacitive Load (μF) Max.
		Nominal (Range) (VDC)	Voltage (VDC)	Current (mA) Min.	Current (mA) Max.		
EN/UL Pending	DB3-05S03LS	5 (4.5~5.5)	3.3	60	600	79	2400
	DB3-05S05LS	5 (4.5~5.5)	5	60	600	81	2400
	DB3-05S09LS	5 (4.5~5.5)	9	33	333	84	1000
	DB3-05S12LS	5 (4.5~5.5)	12	25	250	83	560
	DB3-05S15LS	5 (4.5~5.5)	15	20	200	84	560
	DB3-05S24LS	5 (4.5~5.5)	24	13	125	83	220
	DB3-12S03LS	12 (10.8~13.2)	3.3	60	600	80	2400
	DB3-12S05LS	12 (10.8~13.2)	5	60	600	81	2400
	DB3-12S09LS	12 (10.8~13.2)	9	33	333	82	1000
	DB3-12S12LS	12 (10.8~13.2)	12	25	250	85	560
	DB3-12S15LS	12 (10.8~13.2)	15	20	200	85	560
	DB3-12S24LS	12 (10.8~13.2)	24	13	125	85	220
	DB3-15S03LS	15 (13.5~16.5)	3.3	60	600	80	2400
	DB3-15S05LS	15 (13.5~16.5)	5	60	600	81	2400

Selection Guide

Certification	Part No.	Input Voltage	Output			Full Load Efficiency (%) Typ.	Capacitive Load(μF) Max.
		Nominal(Range) (VDC)	Voltage (VDC)	Current (mA) Min.	Current (mA) Max.		
EN/UL Pending	DB3-15S09LS	15 (13.5~16.5)	9	33	333	83	1000
	DB3-15S12LS	15 (13.5~16.5)	12	25	250	85	560
	DB3-15S15LS	15 (13.5~16.5)	15	20	200	85	560
	DB3-15S24LS	15 (13.5~16.5)	24	13	125	86	220
	DB3-24S03LS	24 (21.6~26.4)	3.3	60	600	80	2400
	DB3-24S05LS	24 (21.6~26.4)	5	60	600	82	2400
	DB3-24S09LS	24 (21.6~26.4)	9	33	333	83	1000
	DB3-24S12LS	24 (21.6~26.4)	12	25	250	85	560
	DB3-24S15LS	24 (21.6~26.4)	15	20	200	86	560
	DB3-24S24LS	24 (21.6~26.4)	24	13	125	87	220

Note: The above efficiency is measured at nominal input voltage and rated output load.

Input Specifications

Item	Operating Conditions		Min.	Typ.	Max.	Unit	
Input Current (Full Load/No-load)	5VDC Input	3.3VDC Output	--	501/10	528/15	mA	
		5VDC Output	--	740/10	780/15	mA	
		Others	--	723/15	760/25	mA	
	12VDC Input	3.3VDC Output	--	206/8	217/15	mA	
		5/9VDC Output	--	308/8	325/15	mA	
		Others	--	294/8	309/15	mA	
	15VDC Input	3.3VDC Output	--	165/7	174/15	mA	
		5VDC Output	--	247/7	260/15	mA	
		9VDC Output	--	241/7	254/15	mA	
		Others	--	235/7	247/15	mA	
	24VDC Input	3.3VDC Output	--	103/3	109/15	mA	
		5/9VDC Output	--	152/3	161/15	mA	
		12/15VDC Output	--	147/3	155/15	mA	
		24VDC Output	--	143/3	151/15	mA	
	Reflected Ripple Current			--	15	--	mA
	Surge Voltage	5VDC Input		-0.7	--	9	VDC
12VDC Input		-0.7	--	18	VDC		
15VDC Input		-0.7	--	21	VDC		
24VDC Input		-0.7	--	30	VDC		
Input Filter Type			Capacitance Filter				
Hot Plug			Unavailable				

Output Specifications

Item	Operating Conditions		Min.	Typ.	Max.	Unit
Output Voltage Accuracy			See Output Regulation Curve			
Line Regulation	Input Voltage Variation: $\pm 1\%$	3.3V	--	± 1.5	--	%
		Others	--	± 1.2	--	%
Load Regulation	10%~100% Load	3.3VDC output	--	20	--	%
		5VDC output	--	15	--	%
		9VDC output	--	10	--	%
		12VDC output	--	8	--	%
		15VDC Output	--	7	--	%
		24VDC Output	--	6	--	%
Ripple & Noise	20MHz Bandwidth (Peak-to-Peak)		--	150	200	mV
Temperature Coefficient	Full Load		--	± 0.03	--	%/°C
Short Circuit Protection			Continuous, self-recovery			

Note: Ripple & noise are measured at 20MHz of bandwidth with a 10uF electrolytic capacitor and a 1uF ceramic capacitor connected inparallel at the output.

General Specifications

Item	Operating Conditions	Min.	Typ.	Max.	Unit
Isolation Voltage	Input-output, test time 1 minute, leakage current less than 1mA	3000	--	--	VDC
Insulation Resistance	Input-output, insulated voltage 500VDC	1000	--	--	MΩ
Isolation Capacitance	Input-Output,100KHz/0.1V	--	20	--	pF
Operating Temperature	Derating when operating temperature≥85℃ (See Temperature derating curve chart)	-40	--	105	℃
Storage Temperature		-55	--	125	℃
Case Temperature Rise	Ta=25℃, Nominal Input, Full Load	--	25	--	℃
Storage Humidity	Non-condensing	5	--	95	%RH
Soldering Profile	Wave soldering	260±5℃; Time: 5 - 10 seconds			
	Manual soldering	360± 10℃; Time: 3 - 5 seconds			
Switching Frequency	Full load, nominal input voltage	--	220	--	kHz
MTBF	MIL-HDBK-217F@25℃	>3500Kh			

Mechanical Specifications

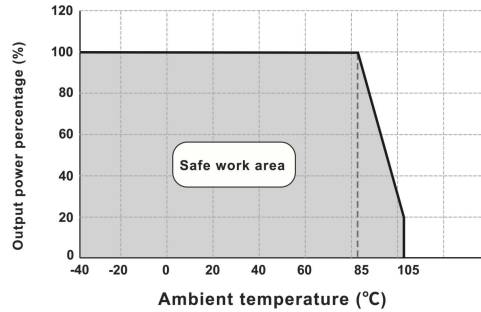
Case Material	Black flame-retardant heat-resistant plastic (UL94V-0)
Mechanical Dimensions	19.60 * 7.05 * 10.10mm
Weight	2.1g (typ.)
Cooling Method	Free air convection

Electromagnetic Compatibility (EMC)

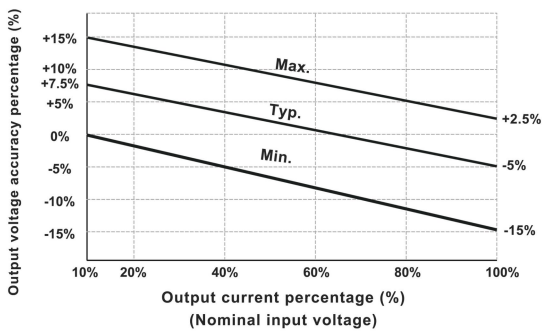
EMI	CE	CISPR32/EN55032 CLASS B (EMC recommended circuit see Fig. 2)
	RE	CISPR32/EN55032 CLASS B (EMC recommended circuit see Fig. 2)
EMS	ESD	IEC/EN61000-4-2 Contact ±4KV / Air ±8KV
		perf. Criteria B

Product Characteristic Curve

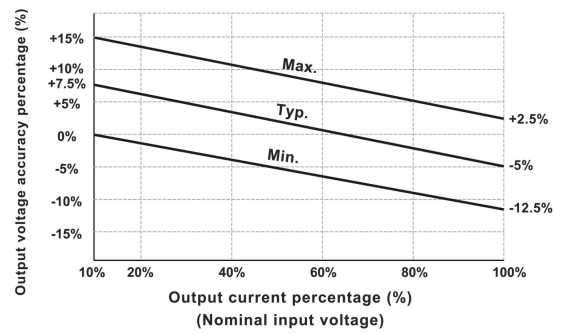
Temperature Derating Curve



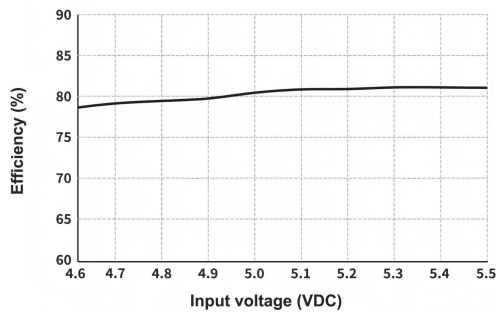
Output Regulation Curve(3.3V Output)



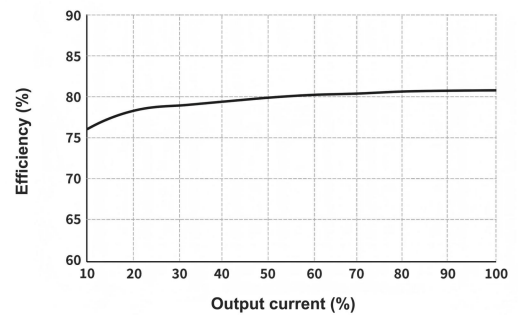
Output Regulation Curve (Others)



Efficiency VS Input Voltage (Full Load, DB3-05S05LS)

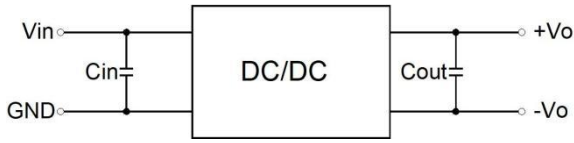


Efficiency VS Output Load (Vin=5V, DB3-05S05LS)



Design Reference - Application Circuit

Application circuit



(Figure 1)

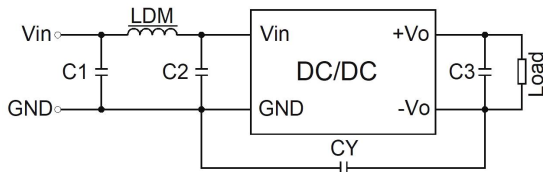
Recommended Capacitive Load Value Table

Vin	Cin	Vo	Cout
5VDC	10uF/16V	3.3/5VDC	10uF/16V
12VDC	4.7uF/25V	9/12VDC	2.2uF/25V
15VDC	2.2uF/25V	15VDC	1.0uF/25V
24VDC	1.0uF/50V	24VDC	1.0uF/50V

All DC/DC converters in this series are tested according to the recommended application circuit (Figure 1) before the shipment. If further reduction of input and output ripple is required, the external input and output capacitors C_{in} and C_{out} can be increased, or capacitors with lower series equivalent impedance can be selected. For each output, under safe and reliable operating conditions, the maximum capacitance of the filter capacitor must not exceed the maximum capacitive load of the product.

Design Reference - EMC Solutions - Recommended Circuits

EMC Recommended Circuit Design and Application



(Figure 2)

Recommended Parameter Table

C1	10μF / 50V
C2	10μF / 50V
C3	Refer to Cout parameter in Figure 1
CY	1000pF/3kVDC
LDM	6.8μH

Note:

1. Typical Application

If further reduction of input and output ripple is required, a Capacitance Filter network can be connected at the input and output terminals. The application circuit is shown in Figure 1. However, care should be taken to select the appropriate filter capacitor. If the capacitor is too large, it may cause startup issues. For each output, the recommended capacitive load values are detailed in the table, under conditions ensuring safe and reliable operation.

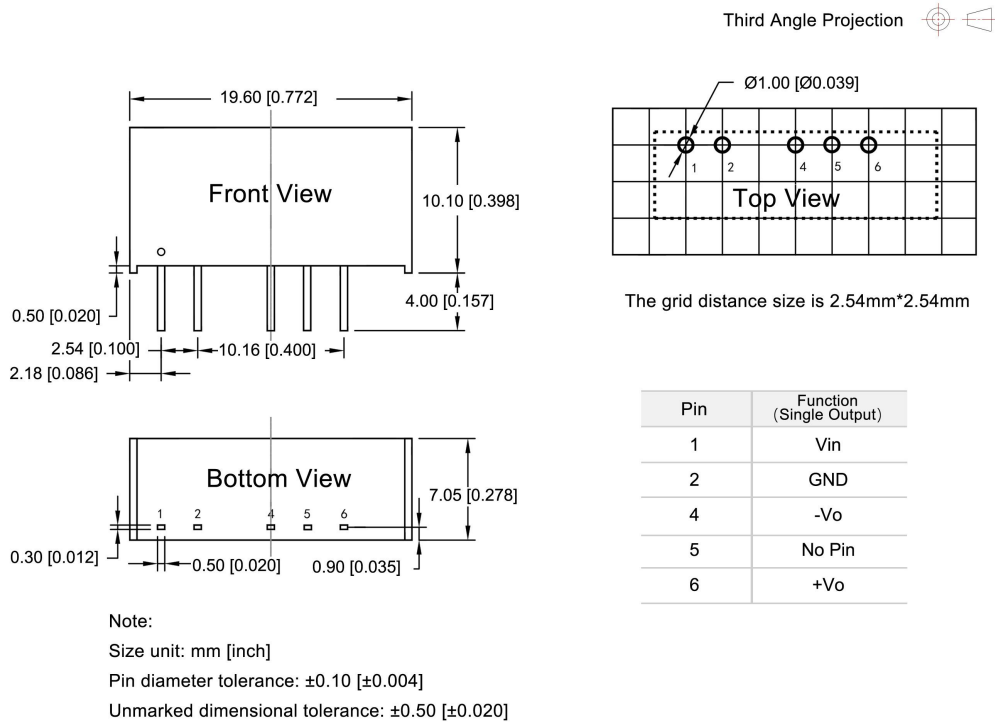
2. EMC Recommended Circuit: See Figure 2

3. Output Load Requirements

To ensure efficient and reliable operation of the module, the minimum output load during use must not be less than 10% of the rated load. If the required power is indeed small, please connect a resistor in parallel at the output (the sum of the power dissipated by the resistor and the actual used power must be greater than or equal to 10% of the rated power).

Dimensions and Recommended Layout

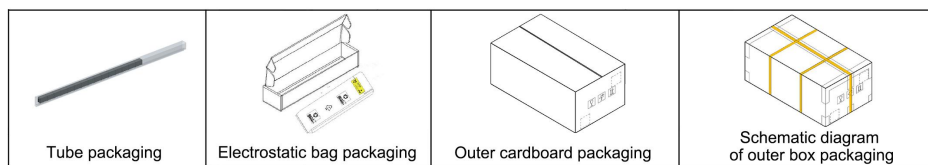
DB3-xxSxxLS Dimensions and Recommended Layout



Packaging Information

Model series (Tube packaging)	Quantity per tube (pcs/ tube)	Quantity of electrostatic bag (pcs/ bag)	Quantity of inner box (pcs/ box)	Full box Quantity (pcs)
DB3-xxSxxLS	26	416	1664	6656

The schematic diagram of tube packaging is shown below:



Product precautions

1. The input voltage should not exceed the specified range value, otherwise it may cause permanent and irreparable damage;
2. It is recommended to use at a load of over 5%. If the load is below 5%, the ripple index of the product may exceed the specifications, but it does not affect the reliability of the product;
3. The maximum capacitive load is tested within the input voltage range and under full load conditions;
4. Unless otherwise specified, all indicators in this manual are measured at $T_a=25\text{ }^\circ\text{C}$, humidity<75% RH, nominal input voltage, and output rated load;
5. All indicator testing methods in this manual are based on our company's corporate standards;
6. Our company can provide product customization, and specific requirements can be directly contacted by our technical personnel;
7. Product specifications are subject to change without prior notice.

Manufacturer contact information

Bettpower Guangzhou Electronic Technology Co., Ltd.

Website: www.bettpower.com

Telephone: +86 - 020 - 32166256

Email: info@bettpower.com

Address: Room 2514-2515, Building A1,1 Doutang Road, Huangpu District, Guangzhou, China

BETTPOWER is a registered trademark of BETTPOWER Guangzhou Electronic Technology Co., Ltd. All of its product names, models, trademarks and brands are the property of the Company.

BETTPOWER Guangzhou Electronic Technology Co., Ltd reserves all rights and the right of final interpretation.