

DF1-xxSxxM Series

DC-DC Converter | 1W | DIP7 | Fixed voltage input, unregulated output | 1500VDC



Features

- Compact DIP7 Package
- Operating Temperature Range: -40°C ~ +105°C
- Isolation Voltage: 3000VDC
- Full Load Efficiency: up to 89% (typ.)
- Continuous Short Circuit Protection
- Designed to Comply with: IEC/EN/UL62368 Standards

Product Description



The DF1-xxSxxM series is 1W unregulated DC/DC converters that are typically used in cost sensitive general purpose power isolation and voltage matching applications. Typical applications are digital interfaces, voltage conversion in distributed powersy stems, general low-frequency analog circuits, relay drive circuits, data switching circuits etc.

Selection Guide

Certification	Part No.	Input Voltage		Output		Full Load Efficiency (%) Typ.	Capacitive Load (µF) Max.
		Nominal (Range) (VDC)	Voltage (VDC)	Current (mA) Min.	Current (mA) Max.		
EN/UL Pending	DF1-03S03M	3.3(2.97-3.63)	3.3	30	303	82	2400
	DF1-03S05M	3.3(2.97-3.63)	5	20	200	83	2400
	DF1-03S09M	3.3(2.97-3.63)	9	11	111	84	1000
	DF1-03S12M	3.3(2.97-3.63)	12	8	84	85	560
	DF1-03S15M	3.3(2.97-3.63)	15	7	67	85	560
	DF1-03S24M	3.3(2.97-3.63)	24	4	42	85	220
	DF1-05S03M	5 (4.5~5.5)	3.3	30	303	80	2400
	DF1-05S05M	5 (4.5~5.5)	5	20	200	84	2400
	DF1-05S09M	5 (4.5~5.5)	9	11	111	86	1000
	DF1-05S12M	5 (4.5~5.5)	12	8	84	89	560
	DF1-05S15M	5 (4.5~5.5)	15	7	67	88	560
	DF1-05S24M	5 (4.5~5.5)	24	4	42	88	220
	DF1-12S03M	12 (10.8~13.2)	3.3	30	303	83	2400

Selection Guide

Certification	Part No.	Input Voltage	Output			Full Load Efficiency (%) Typ.	Capacitive Load (μF) Max.
		Nominal (Range) (VDC)	Voltage (VDC)	Current (mA) Min.	Current (mA) Max.		
EN/UL Pending	DF1-12S05M	12 (10.8~13.2)	5	20	200	86	2400
	DF1-12S09M	12 (10.8~13.2)	9	11	111	89	1000
	DF1-12S12M	12 (10.8~13.2)	12	8	84	89	560
	DF1-12S15M	12 (10.8~13.2)	15	7	67	89	560
	DF1-12S24M	12 (10.8~13.2)	24	4	42	89	220
	DF1-15S03M	15 (13.5~16.5)	3.3	30	303	82	2400
	DF1-15S05M	15 (13.5~16.5)	5	20	200	85	2400
	DF1-15S09M	15 (13.5~16.5)	9	11	111	88	1000
	DF1-15S12M	15 (13.5~16.5)	12	8	84	89	560
	DF1-15S15M	15 (13.5~16.5)	15	7	67	89	560
	DF1-15S24M	15 (13.5~16.5)	24	4	42	89	220
	DF1-24S03M	24 (21.6~26.4)	3.3	30	303	84	2400
	DF1-24S05M	24 (21.6~26.4)	5	20	200	87	2400
	DF1-24S09M	24 (21.6~26.4)	9	11	111	89	1000
	DF1-24S12M	24 (21.6~26.4)	12	8	84	88	560
	DF1-24S15M	24 (21.6~26.4)	15	7	67	89	560
	DF1-24S24M	24 (21.6~26.4)	24	4	42	89	220

Note: The above efficiency is measured at nominal input voltage and rated output load.

Input Specifications

Item	Operating Conditions		Min.	Typ.	Max.	Unit
Input Current (Full Load/No-load)	3.3VDC Input	3.3VDC Output	--	370/10	388/15	mA
		Others	--	356/12	365/18	mA
	5VDC Input	3.3VDC Output	--	250/8	260/15	mA
		5/9VDC Output	--	232/10	250/15	mA
		Others	--	224/18	236/25	mA
	12VDC Input	3.3VDC Output	--	101/7	105/15	mA
		5VDC Output	--	99/7	102/15	mA
		Others	--	94/8	99/15	mA
	15VDC Input	3.3/5VDC Output	--	82/6	85/15	mA
		5VDC Output	--	78/6	83/15	mA
		Others	--	75/6	79/15	mA
	24VDC Input	3.3VDC Output	--	50/3	53/15	mA
		5VDC Output	--	49/3	51/15	mA
		Others	--	48/4	50/15	mA
	Reflected Ripple Current			--	15	--
Surge Voltage	3.3VDC Input		-0.7	--	5	VDC
	5VDC Input		-0.7	--	9	VDC
	12VDC Input		-0.7	--	18	VDC
	15VDC Input		-0.7	--	21	VDC
	24VDC Input		-0.7	--	30	VDC
Input Filter Type			Capacitance Filter			
Hot Plug			Unavailable			

Output Specifications

Item	Operating Conditions		Min.	Typ.	Max.	Unit
Output Voltage Accuracy			See Output Regulation Curve			
Line Regulation	Input Voltage Variation: $\pm 1\%$	3.3V Output	--	± 1.5	--	%
		Others	--	± 1.2	--	%
Load regulation	10%~100% load	3.3VDC Output	--	10	--	%
		5VDC Output	--	10	--	%
		9VDC Output	--	8	--	%
		12VDC Output	--	8	--	%
		15VDC Output	--	8	--	%
		24VDC Output	--	6	--	%
Ripple & noise	20MHz bandwidth (peak-to-peak)		--	45	120	mV
Temperature coefficient	Full load		--	± 0.02	--	%/°C

Short circuit protection	Continuous, self-recovery
--------------------------	---------------------------

Note: Ripple & noise are measured at 20MHz of bandwidth with a 10uF electrolytic capacitor and a 1uF ceramic capacitor connected inparallel at the output.

General Specifications

Item	Operating Conditions	Min.	Typ.	Max.	Unit
Isolation Voltage	Input-output, test time 1 minute, leakage current less than 1mA	3000	--	--	VDC
Insulation Resistance	Input-output, insulated voltage 500VDC	1000	--	--	MΩ
Isolation Capacitance	Input-Output,100KHz/0.1V	--	20	--	pF
Operating Temperature	Derating when operating temperature≥85℃ (See Temperature derating curve chart)	-40	--	105	℃
Storage Temperature		-55	--	125	℃
Case Temperature Rise	Ta=25℃, Nominal Input, Full Load	--	25	--	℃
Storage Humidity	Non-condensing	5	--	95	%RH
Soldering Profile	Wave soldering	260±5℃; Time: 5-10s			
	Manual Soldering	360±10℃; Time: 3-5s			
Switching Frequency	Full load, nominal input voltage	--	220	--	kHz
MTBF	MIL-HDBK-217F@25℃	>3500Kh			

Mechanical Specifications

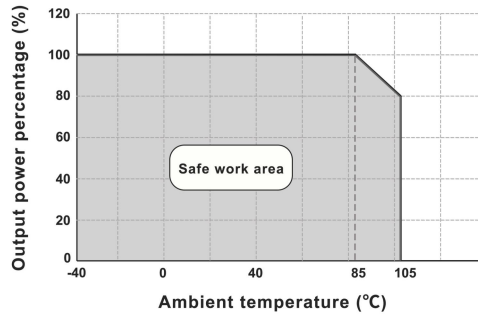
Case Material	Black flame-retardant and heat-resistant plastic (UL94V-0)
Mechanical Dimensions	12.70 * 10.10 * 7.00mm
Weight	1.65g (typ.)
Cooling Method	Free air convection

Electromagnetic Compatibility (EMC)

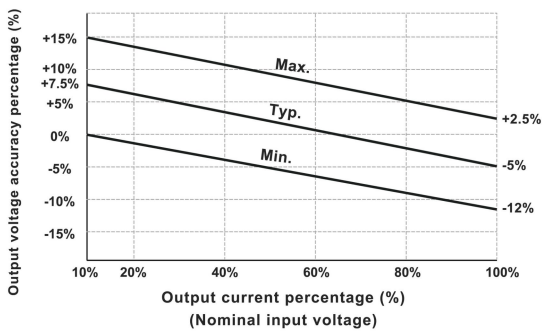
EMI	CE	CISPR32/EN55032 CLASS B (EMC recommended circuit see Fig. 2)
	RE	CISPR32/EN55032 CLASS B (EMC recommended circuit see Fig. 2)
EMS	ESD	IEC/EN61000-4-2 Contact ±4KV Air ±8KV perf. Criteria B

Product Characteristic Curve

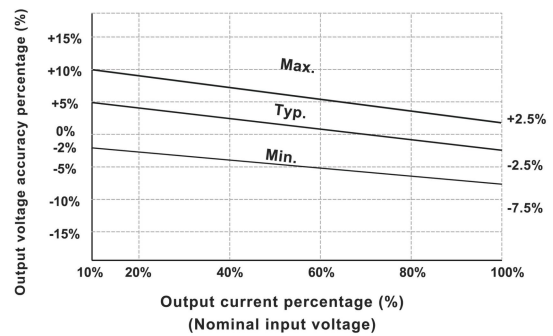
Temperature Derating Curve



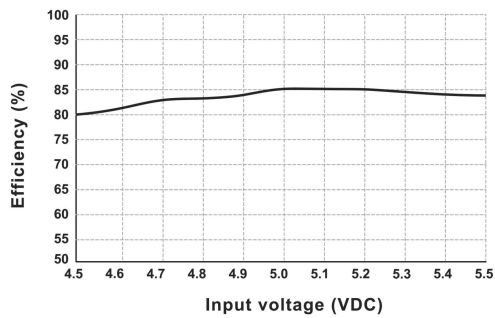
Output Regulation Curve (3.3V Output)



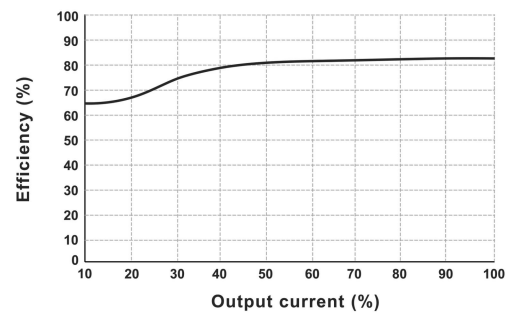
Output Regulation Curve (Others)



Efficiency vs. Input Voltage (Full Load, DF1-05S05M)

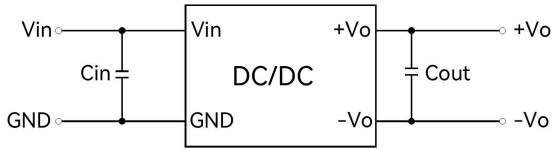


Efficiency vs. Output Load (Vin=5V, DF1-05S05M)



Design Reference - Application circuit

Application circuit



(Figure 1)

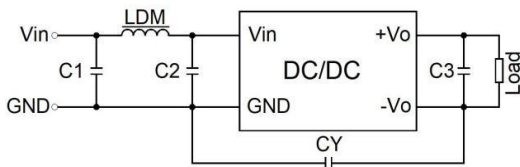
Recommended Capacitive Load Value Table

Vin	Cin	Vo	Cout
3.3/5VDC	4.7uF/16V	3.3/5/7.2VDC	10uF/16V
12VDC	2.2uF/25V	9/12VDC	4.7uF/25V
15VDC	1.0uF/25V	15VDC	1.0uF/25V
24VDC	1.0uF/50V	24VDC	0.47uF/50V

All DC/DC converters in this series are tested according to the recommended application circuit (Figure 1) before the shipment. If further reduction of input and output ripple is required, the external input and output capacitors C_{in} and C_{out} can be increased, or capacitors with lower series equivalent impedance can be selected. For each output, under safe and reliable operating conditions, the maximum capacitance of the filter capacitor must not exceed the maximum capacitive load of the product.

Design Reference - EMC Solutions - Recommended Circuits

EMC Recommended Circuit Design and Application



(Figure 2)

Recommended parameter values

C1	4.7μF /50V
C2	4.7μF /50V
C3	Refer to Cout parameter in Figure 1
CY	1000pF/3kV
LDM	6.8μH

Note:

1. Typical Application

If further reduction of input and output ripple is required, a Capacitance Filter network can be connected at the input and output terminals, as shown in the application circuit in Figure 1. However, appropriate filter capacitors should be selected. If the capacitor is too large, it may cause startup issues. For each output, under conditions ensuring safe and reliable operation, the recommended capacitive load values are detailed in the table.

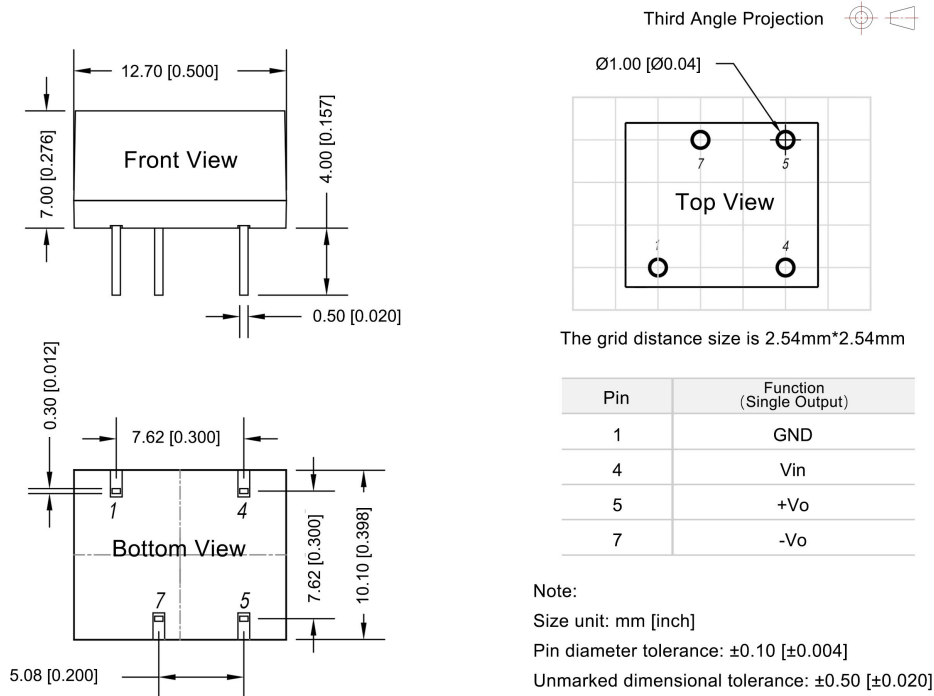
2. EMC Recommended Circuit: See Figure 2

3. Output Load Requirements

To ensure efficient and reliable operation of the module, the minimum output load during use should not be less than 10% of the rated load. If the required power is indeed small, please connect a resistor in parallel at the output terminal (the sum of the resistor's power dissipation and the actual power used should be greater than or equal to 10% of the rated power).

Dimensions and Recommended Layout

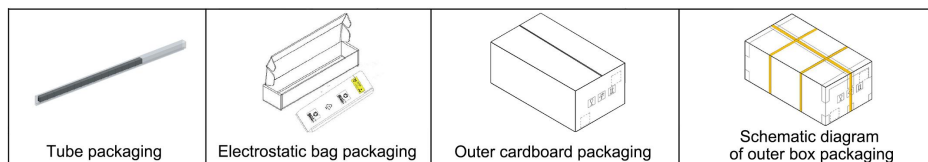
DF1-xxSxxM Dimensions and Recommended Layout



Packaging Information

Model series (Tube packaging)	Quantity per tube (pcs/ tube)	Quantity of electrostatic bag (pcs/ bag)	Quantity of inner box (pcs/ box)	Full box Quantity (pcs)
DF1-xxSxxM	41	410	1640	6560

The schematic diagram of tube packaging is shown below:



Product precautions

1. The input voltage should not exceed the specified range value, otherwise it may cause permanent and irreparable damage;
2. It is recommended to use at a load of over 5%. If the load is below 5%, the ripple index of the product may exceed the specifications, but it does not affect the reliability of the product;
3. The maximum capacitive load is tested within the input voltage range and under full load conditions;
4. Unless otherwise specified, all indicators in this manual are measured at $T_a=25\text{ }^\circ\text{C}$, humidity<75% RH, nominal input voltage, and output rated load;
5. All indicator testing methods in this manual are based on our company's corporate standards;
6. Our company can provide product customization, and specific requirements can be directly contacted by our technical personnel;
7. Product specifications are subject to change without prior notice.

Manufacturer contact information

Bettpower Guangzhou Electronic Technology Co., Ltd.

Website: www.bettpower.com

Telephone: +86 - 020 - 32166256

Email: info@bettpower.com

Address: Room 2514-2515, Building A1,1 Doutang Road, Huangpu District, Guangzhou, China

BETTPOWER is a registered trademark of BETTPOWER Guangzhou Electronic Technology Co., Ltd. All of its product names, models, trademarks and brands are the property of the Company.

BETTPOWER Guangzhou Electronic Technology Co., Ltd reserves all rights and the right of final interpretation.