

WB6-xxSxxMP Series

DC-DC Converter | 6W | 2:1 Wide input voltage, regulated Output | DIP24 | 1500VDC



Features

- International standard pins DIP24 package
- 2:1 wide input voltage range
- Operating temperature range: -40°C to +85°C
- Isolation Voltage: 1500VDC
- Full Load Efficiency: 87% (typ.)
- Output short circuit, over-current, and input under-voltage protection
- Designed to meet IEC/EN/BS EN/UL 62368

Product Description



The WB6-xxSxxMP series is an isolated 6W DC-DC converter module with a 2:1 input voltage range. It features efficiency up to 87%, isolation voltage up to 1500VDC, and safe operation over an ambient temperature range of -40°C to +85°C. With output short circuit, over-current, and input under-voltage protection, it is widely used in medical, industrial control, power, instrumentation, automotive, railway, and communication fields.

Selection Guide

Certification	Part No.	Input Voltage (VDC) Nominal (Range)	Output Voltage (VDC)	Output Current (mA) Max.	Full Load Efficiency %(typ.)	Capacitive Load (μF)Max.
--	WB6-05S03MP	5 (4.5~9)	3.3	1200	76	4700
	WB6-05S05MP	5 (4.5~9)	5	1200	80	2200
	WB6-05S09MP	5 (4.5~9)	9	667	82	2200
	WB6-05S12MP	5 (4.5~9)	12	500	84	1000
	WB6-05S15MP	5 (4.5~9)	15	400	84	1000
	WB6-05S24MP	5 (4.5~9)	24	250	85	470
	WB6-12S03MP	9 (9~18)	3.3	1200	78	4700
	WB6-12S05MP	9 (9~18)	5	1200	82	2200
	WB6-12S09MP	9 (9~18)	9	667	85	2200
	WB6-12S12MP	9 (9~18)	12	500	86	1000
	WB6-12S15MP	9 (9~18)	15	400	86	1000
	WB6-12S24MP	9 (9~18)	24	250	87	470
	WB6-24S03MP	24 (18~36)	3.3	1200	80	4700
	WB6-24S05MP	24 (18~36)	5	1200	83	2200

Selection Guide

Certification	Part No.	Input Voltage (VDC) Nominal (Range)	Output Voltage (VDC)	Output Current (mA) Max.	Full Load Efficiency %(typ.)	Capacitive Load (μ F)Max.
--	WB6-24S09MP	24 (18~36)	9	667	85	2200
	WB6-24S12MP	24 (18~36)	12	500	86	1000
	WB6-24S15MP	24 (18~36)	15	400	86	1000
	WB6-24S24MP	24 (18~36)	24	250	87	470
	WB6-48S03MP	48 (36~72)	3.3	1200	80	4700
	WB6-48S05MP	48 (36~72)	5	1200	81	2200
	WB6-48S09MP	48 (36~72)	9	667	85	2200
	WB6-48S12MP	48 (36~72)	12	500	84	1000
	WB6-48S15MP	48 (36~72)	15	400	86	1000
	WB6-48S24MP	48 (36~72)	24	250	88	470

Note: 1. The input voltage must not exceed this value, otherwise it may cause permanent and irreparable damage.

2. The above efficiency is measured at nominal input voltage and rated output load.

Input Specifications

Item	Operating Conditions	Min.	Typ.	Max.	Unit
Impulse Voltage (1sec. max.)	5VDC Input	-0.7	--	15	VDC
	12VDC Input	-0.7	--	30	VDC
	24VDC Input	-0.7	--	50	VDC
	48VDC Input	-0.7	--	90	VDC
Input Under-voltage Protection	5VDC Input	3.8	3.9	4	VDC
	12VDC Input	7.3	7.5	7.7	VDC
	24VDC Input	14.7	15.1	15.5	VDC
	48VDC Input	30	31	32	VDC
Input Under-voltage Recovery	5VDC Input	4.03	4.13	4.23	VDC
	12VDC Input	8	8.2	8.4	VDC
	24VDC Input	16.3	16.7	17.1	VDC
	48VDC Input	31.6	32.6	33.6	VDC
Input Filter		Capacitor Filter and Pi Filter			
Hot Plug		Unavailable			

Output Characteristics

Item	Operating Conditions	Min.	Typ.	Max.	Unit	
Output Voltage Accuracy	3.3V Output	--	±2.0	±3.0	%	
	Other Outputs	--	±1.0	±2.0	%	
Line Regulation	Full load $I_o=100\%$	--	±0.25	±0.5	%	
Load Regulation	10% to 100% Load	3.3V Output	--	±0.6	±1.0	%
		Other Outputs	--	±0.5	±1.0	%
Ripple & Noise	20MHz Bandwidth	--	50	100	mVp-p	
Temperature Coefficient	Full load	--	±0.03	--	%/°C	
Short Circuit Protection	Input Voltage Range	Hiccup protection, self-recovery				

General Specifications

Item	Operating Conditions	Min.	Typ.	Max.	Unit
Isolation Voltage	Input-Output, Test Time 1 minute, leakage current $\leq 1\text{mA}$	1500	--	--	VDC
Insulation Resistance	Input-Output, Insulation Voltage 500VDC	1000	--	--	MΩ
Isolation Capacitance	Input-Output, 100KHz/0.1V	--	500	--	pF
Operating Temperature	See figure below: Temperature Derating Curve	-40	--	85	°C
Storage Temperature		-55	--	125	°C
Soldering Profile	Soldering point is 1.5mm away from case	--	260	300	°C
Switching Frequency		300	330	360	kHz

MTBF	MIL-HDBK-217F@25°C	>3000Kh
------	--------------------	---------

Mechanical Specifications

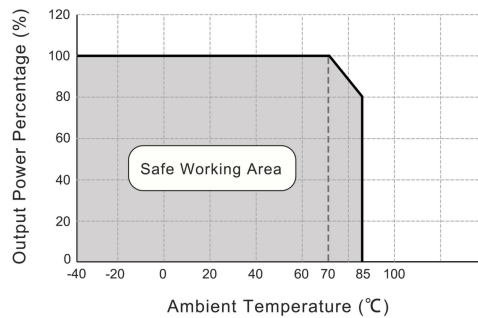
Case Material	Nickel-plated copper, five-sided shielding
Mechanical Dimensions	31.80 * 20.32 * 10.20mm
Weight	18.00g(typ.)
Cooling Method	Free air convection

Electromagnetic Compatibility (EMC)

EMI	CE	CISPR32/EN55032 CLASS B (Recommended circuit see Figure 2-3)	
	RE	CISPR32/EN55032 CLASS B (Recommended circuit see Figure 2-3)	
EMS	ESD	IEC/EN61000-4-2 Contact±4KV	perf. Criteria B
	RS	IEC/EN61000-4-3 10V/m	perf. Criteria A
	EFT	IEC/EN61000-4-4 ±2KV (Recommended circuit see Figure 2-3)	perf. Criteria B
	Surge	IEC/EN61000-4-5 line to line±2KV (Recommended circuit see Figure 2-3)	perf. Criteria B
	CS	IEC/EN61000-4-6 3 Vr.m.s	perf. Criteria A

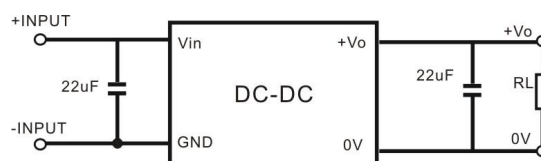
Product Characteristic Curve

Temperature Derating Curve



Design Reference - Application circuit

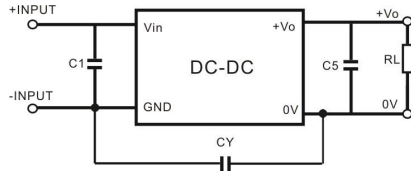
Application circuit 1



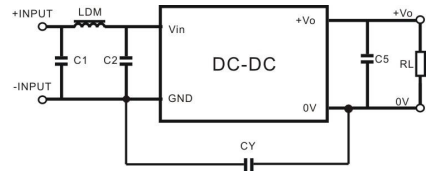
Note: All DC-DC converters in this series were tested using the recommended circuit shown in Application circuit 1 before delivery.

Design Reference - EMC Solutions - Recommended Circuits

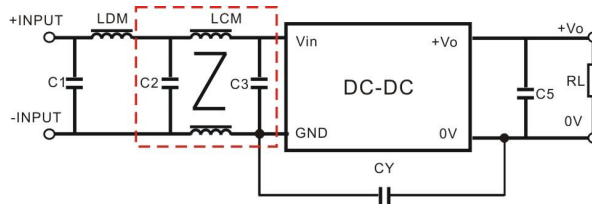
EMI Solutions - Recommended Circuits



(EMC Recommended Circuit 2-1)



(EMC Recommended Circuit 2-2)



(EMC Recommended Circuit 2-3)

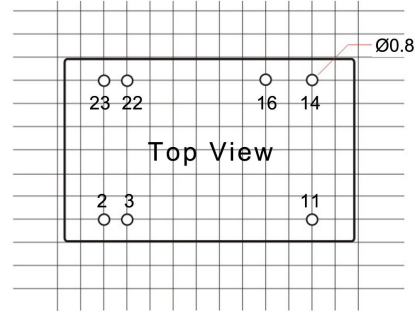
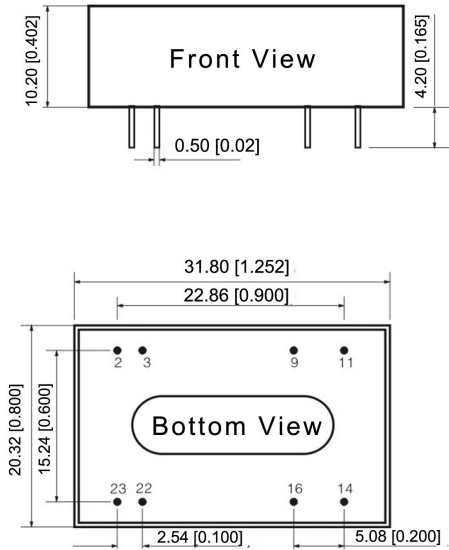
Recommended parameter values for EMC solution circuits	Model	Recommended Reference Value
	C1	22uF~47uF Ceramic capacitor X5R or X7R
	C2	22uF~47uF Ceramic capacitor X5R or X7R
	C3	22uF~47uF Ceramic capacitor X5R or X7R
	C5	22uF~47uF Ceramic capacitor X5R or X7R
	CY	1nF/2KV Ceramic capacitor X5R or X7R
	LDM	1uH~4.7uH Power inductance
	LCM	3.3mH R10K,B10 material

1. Unless otherwise specified, all data in this document are measured at $T_a=25^{\circ}\text{C}$, humidity<75%, nominal input voltage and output rated load.
2. The sealing material and case of this series comply with UL94V-0 flame retardant standard.

Dimensions and Recommended Layout

WB6-xxSxxMP Dimensions and Recommended Layout

Third Angle Projection



The grid distance size is 2.54mm*2.54mm

Pin	Function
22,23	+VIN
2,3	-VIN
16	0V
14	Vo
9	No Pin
11	NC

Note:

Size unit: mm [inch]

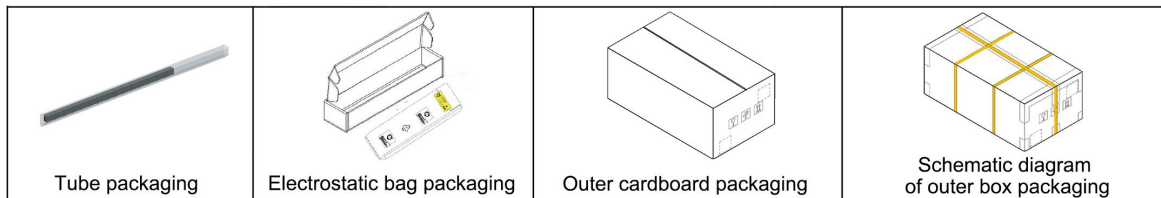
Pin diameter tolerance: ± 0.10 [± 0.004]

Unmarked dimensional tolerance: ± 0.50 [± 0.020]

Packaging Information

Model Series (Tube Packaging)	Quantity per Tube (pcs/tube)	Quantity per Anti-static Bag (pcs/bag)	Inner Carton Quantity (pcs/carton)	Full Carton Quantity (pcs/carton)(pcs)
WB6-xxSxxMP	16	80	320	1280

The schematic diagram of tube packaging is shown below:



Product precautions

1. The input voltage should not exceed the specified range value, otherwise it may cause permanent and irreparable damage.
 2. It is recommended to use at a load of over 5%. If the load is below 5%, the ripple index of the product may exceed the specifications, but it does not affect the reliability of the product.
 3. The maximum capacitive load is tested within the input voltage range and under full load conditions.
 4. Unless otherwise specified, all indicators in this manual are measured at $T_a=25\text{ }^\circ\text{C}$, humidity<75% RH, nominal input voltage, and output rated load.
 5. All indicator testing methods in this manual are based on our company's corporate standards.
 6. Our company can provide product customization, and specific requirements can be directly contacted by our technical personnel.
- Product specifications are subject to change without prior notice.

Manufacturer contact information

Bettpower Guangzhou Electronic Technology Co., Ltd.

Website: www.bettpower.com

Telephone: +86 - 020 - 32166256

Email: info@bettpower.com

Address: Room 2514-2515, Building A1, 1 Doutang Road, Huangpu District, Guangzhou, China

BETTPOWER is a registered trademark of BETTPOWER Guangzhou Electronic Technology Co., Ltd. All of its product names, models, trademarks and brands are the property of the Company.

BETTPOWER Guangzhou Electronic Technology Co., Ltd reserves all rights and the right of final interpretation.